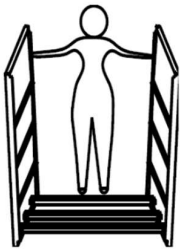


电池柜安装说明 (16 节电池柜为例)

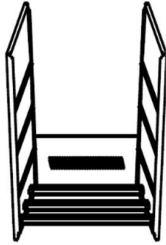
Battery cabinet installation instructions

(16 batteries cabinet as an example)



1. 安装前后板和承力架 (请按照定位安装承力架)。

1. Install the front and rear panels and load-bearing strips (please install the load-bearing strips according to the positioning).



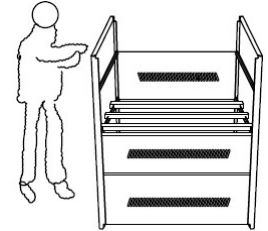
2. 安装左或右侧板(1 件侧板)。

2. Install the left or right side panel (1 side panel).



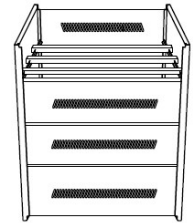
3. 安装好底层一组电池并接好电池线, 然后安装左或右侧板和承力架。

3. Install the bottom battery and connect the battery cable, then install the left or right side plate and load-bearing strips.



4. 重复步骤 3 直至四层电池接线完成。然后完成电池柜到设备的连线。

4. Repeat step 3 until the four-layer battery wiring is complete. Then complete the wiring from the battery cabinet to the device.



5. 最后检查无误后安装侧面板和上面板。

5. Install the side panel and top panel after the final inspection.



注意事项:

1. 电池柜安装完成后, 禁止移动。
2. 2 节/3 节电池柜是单层; 6 节/8 节电池柜是两层; 16 节电池柜是四层组合箱; 32 节/40 节电池柜是四层二排组合箱。

NOTES:

1. After the battery cabinet is installed, it is forbidden to move.
2. 2/3 batteries cabinet is a single layer cabinet. 6/8 batteries cabinet is a two-layer cabinet. 16 batteries cabinet is a four-layer cabinet. 32/40 batteries cabinet is a four-layer and two-row cabinet.

⚠ 警告:

- 安装或更换电池及电池柜必须由经过培训的专业技术人员进行, 为了您的安全, 请穿戴好防砸鞋、绝缘手套, 使用带有绝缘柄的工具。
- 勿将电池打开或损坏, 溢出的电解液具有很强的毒性, 对人体有害。
- 勿将电池正负极短路, 否则会导致电击或着火。
- 需保持干净的工作环境, 避开潮气、可燃性气体、可溶性液体或腐蚀性物质环境。
- 任何紧急情况下, 先切断电池开关。

⚠ Cautions:

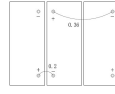
- Installation or replacement of batteries and battery cabinets must be performed by trained personnel. For your safety, please wear anti-smashing shoes, insulated gloves, and use tools with insulated handles.
- Do not open or damage the battery. The overflowing electrolyte is very toxic and harmful to humans.
- Do not short circuit the battery positive pole and negative pole, otherwise it will cause electric shock or fire.
- Maintain a clean working environment and avoid moisture, flammable gases, soluble liquids or corrosive materials.
- Shut off the battery switch in any emergency.

Battery wiring diagram reference



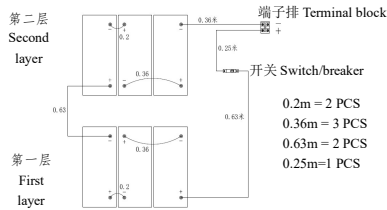
0.2m = 1 PCS

2 batteries wiring diagram



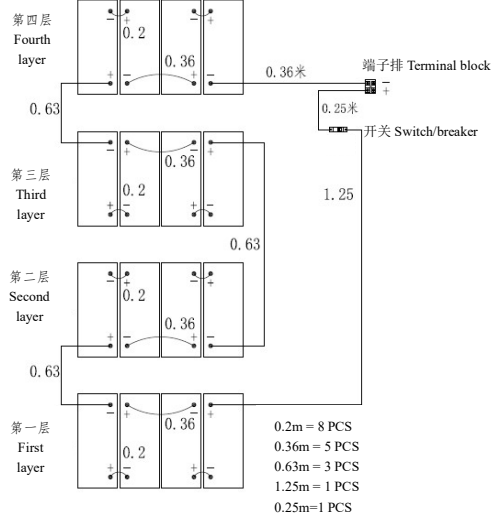
0.2m = 1 PCS
0.36m = 1 PCS

3 batteries wiring diagram



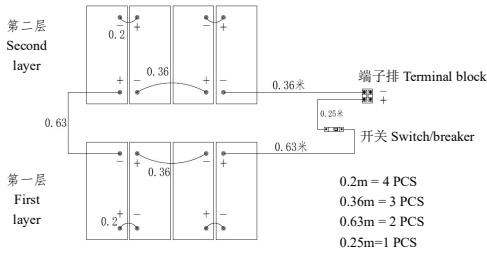
0.2m = 2 PCS
0.36m = 3 PCS
0.63m = 2 PCS
0.25m = 1 PCS

6 batteries wiring diagram



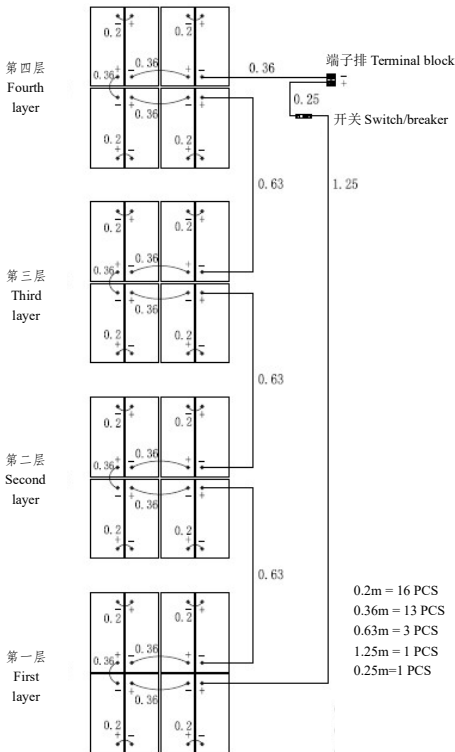
0.2m = 8 PCS
0.36m = 5 PCS
0.63m = 3 PCS
1.25m = 1 PCS
0.25m = 1 PCS

16 batteries wiring diagram



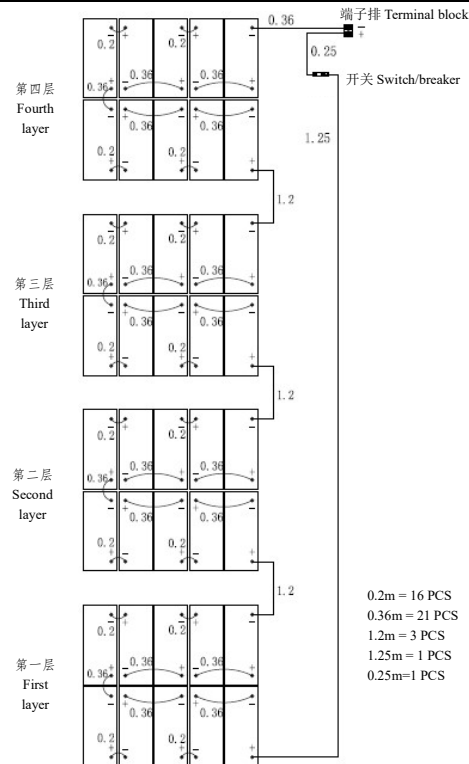
0.2m = 4 PCS
0.36m = 3 PCS
0.63m = 2 PCS
0.25m = 1 PCS

8 batteries wiring diagram



0.2m = 16 PCS
0.36m = 13 PCS
0.63m = 3 PCS
1.25m = 1 PCS
0.25m = 1 PCS

32 batteries wiring diagram



0.2m = 16 PCS
0.36m = 21 PCS
1.2m = 3 PCS
1.25m = 1 PCS
0.25m = 1 PCS

40 batteries wiring diagram